

Prévalence du tabagisme en France et comparaisons internationales

François BECK,
Romain GUIGNARD,
Inpes, Département « Enquêtes et
analyse statistiques »

Paris, 22 mai 2012

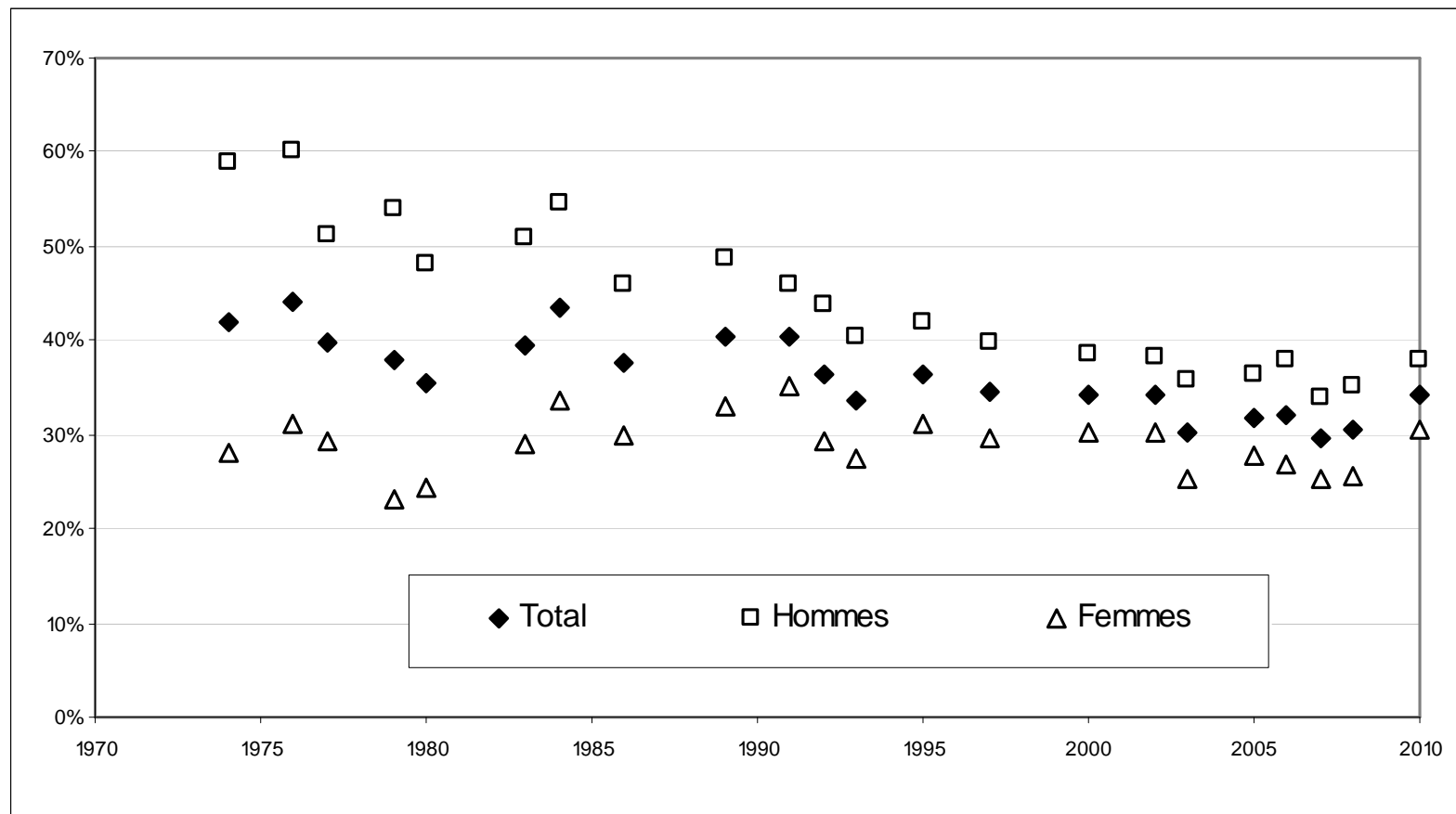
L'Inpes

- **L'Institut national de prévention et d'éducation pour la Santé.**
 - Etablissement public sous tutelle du ministère chargé de la Santé.
 - Mission: mettre en œuvre des politiques de prévention et d'éducation pour la santé dans le cadre plus général des orientations de santé publique définies par le Ministère de la Santé
- **L'Inpes intervient sur plusieurs thématiques de santé publique:**
 - Prévention du sida et des IST, nutrition, prévention de la toxicomanie, maladies chroniques...
 - Dans ce cadre, la prévention du tabagisme occupe une place prépondérante avec un programme dédié.
- **Plusieurs modes d'actions:**
 - études, recherche, outils pédagogiques, soutien aux actions de proximité dans le champ de l'éducation pour la santé ou de l'éducation du patient...
 - et communication, qu'elle soit médiatique ou non.

Méthode du Baromètre santé 2010

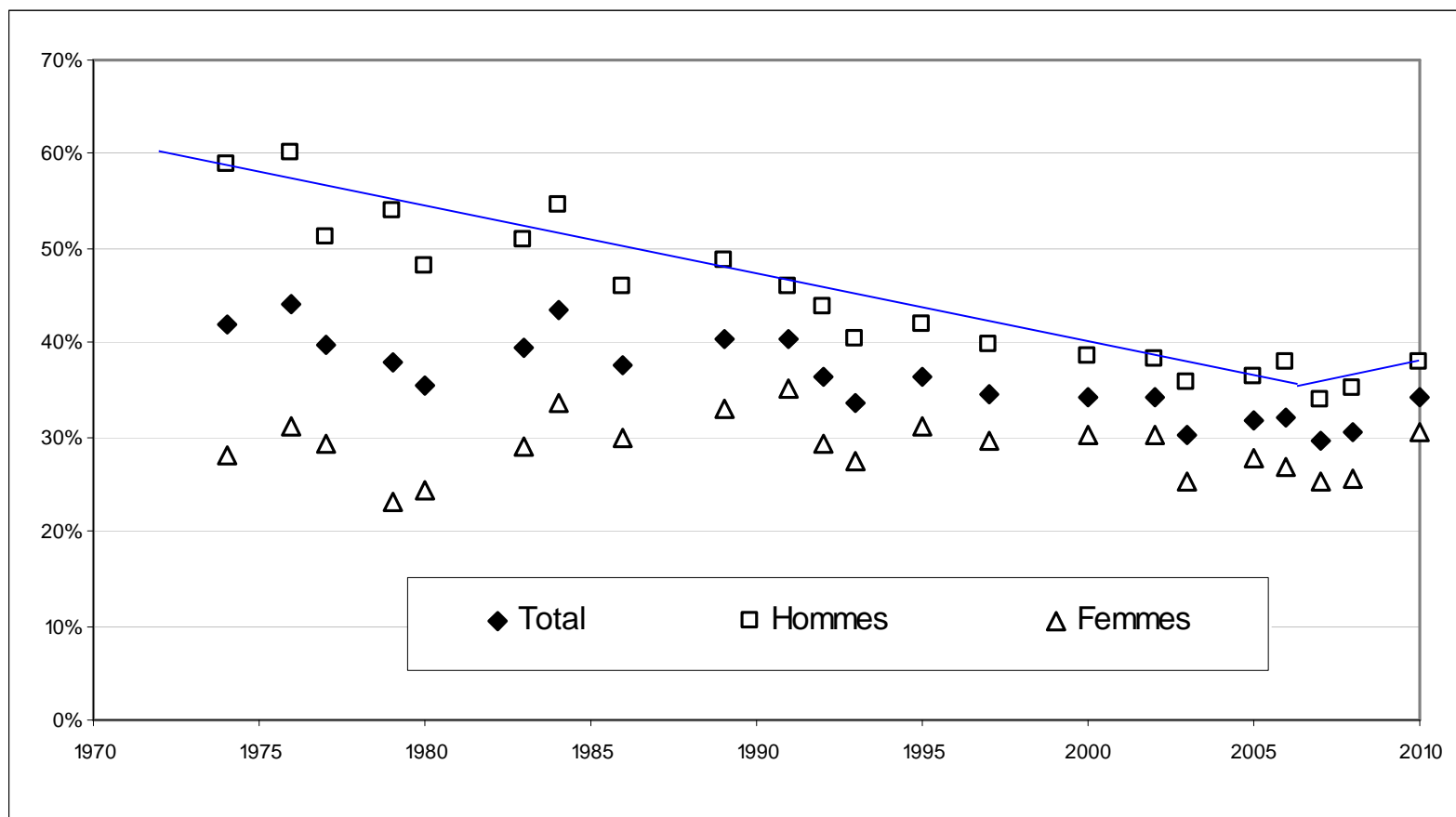
- Enquête quinquennale
- Enquête téléphonique (auprès des fixe - y compris dégroupés - et mobile) représentative en population générale
- Echantillon aléatoire :
 - 30 514 personnes de 12 à 75 ans en 2005 ;
 - 27 653 personnes de 15 à 85 ans en 2010
- Recours à une société de suivi du terrain
- Questions et indicateurs correspondant aux standards mondiaux (OEDT et OMS notamment)

Evolution globale du tabagisme actuel entre 1975 et 2010



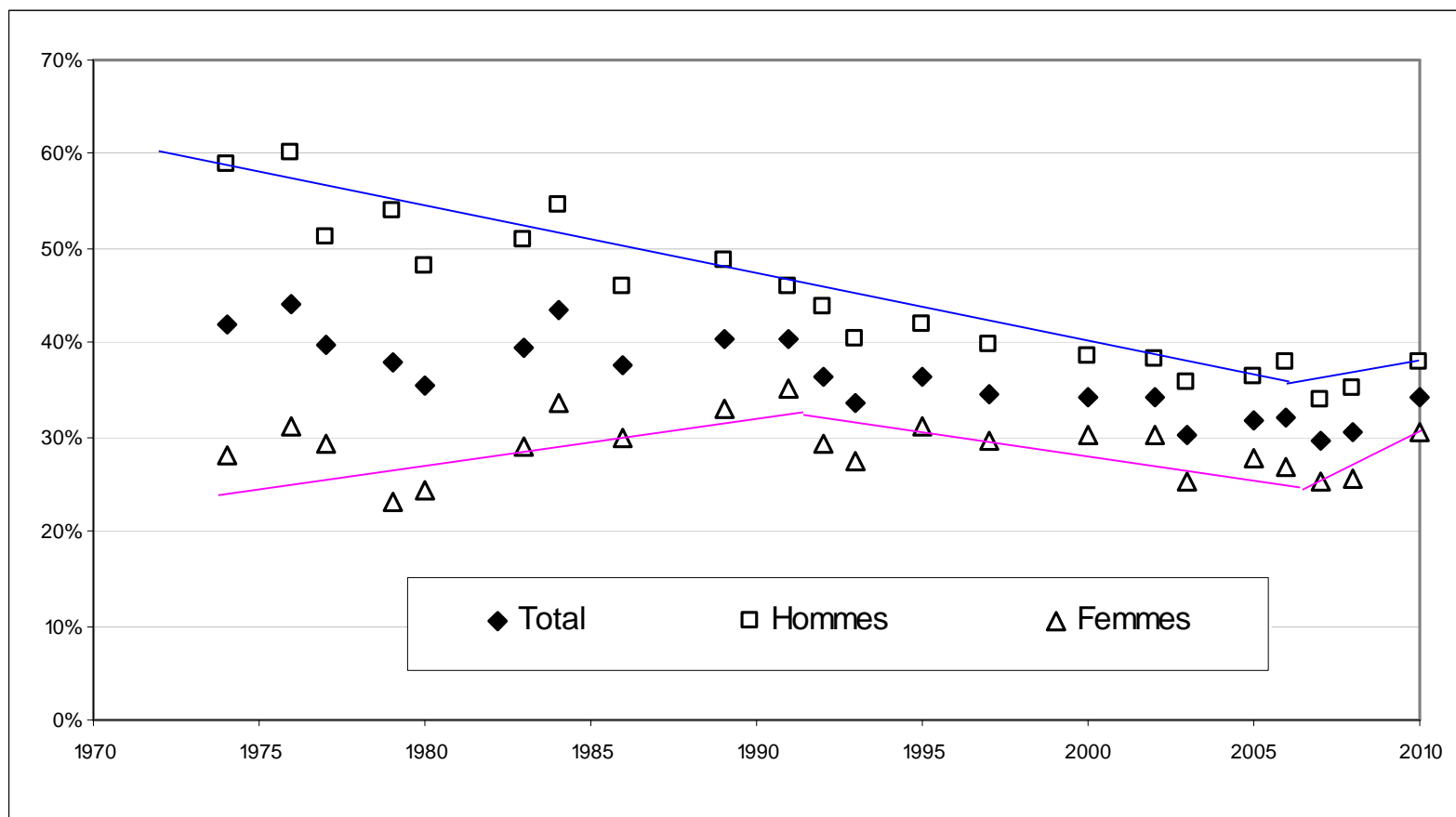
Sources : enquêtes CFES de 1974 à 2000 ; INPES, 2003, 2005, 2010.

Evolution globale du tabagisme actuel entre 1975 et 2010



Sources : enquêtes CFES de 1974 à 2000 ; INPES, 2003, 2005, 2010.

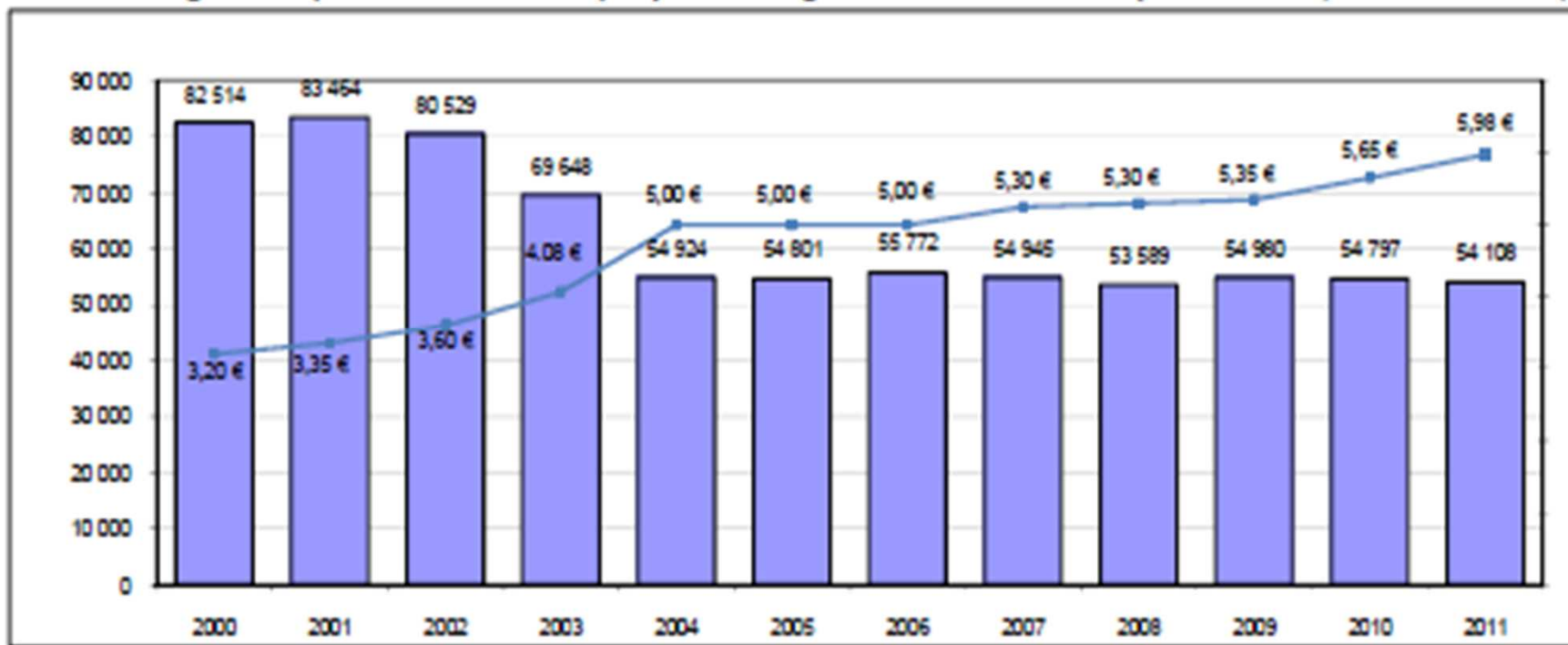
Evolution globale du tabagisme actuel entre 1975 et 2010



Sources : enquêtes CFES de 1974 à 2000 ; INPES, 2003, 2005, 2010.

Evolution des ventes de cigarettes en millions d'unités entre 2000 et 2011

Prix des cigarettes de la classe la plus vendue



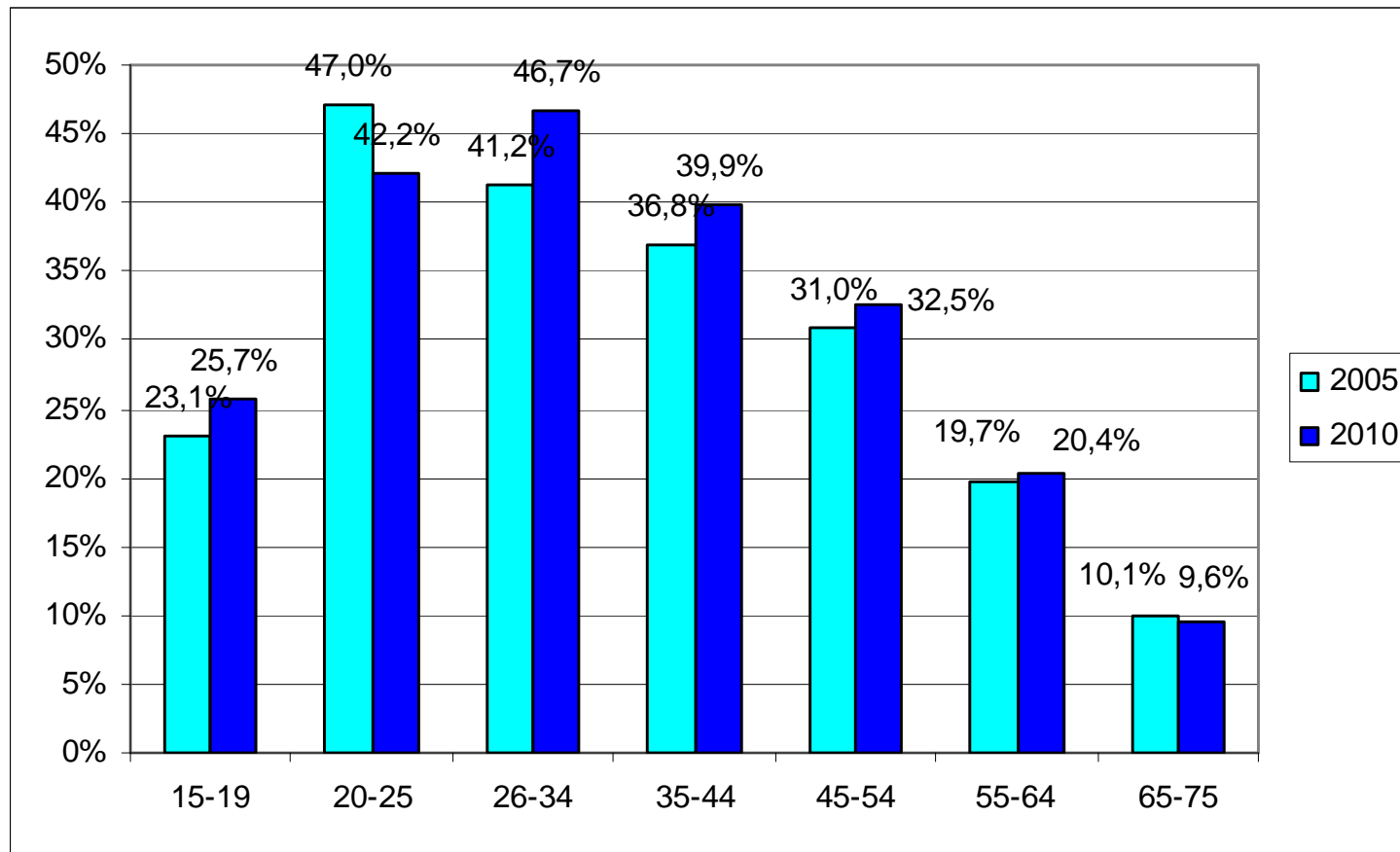
- Source : Altadis distribution/Direction générale des douanes et droits indirects (DGDDI)

Nombre et volume (en tonnes) des saisies de cigarettes



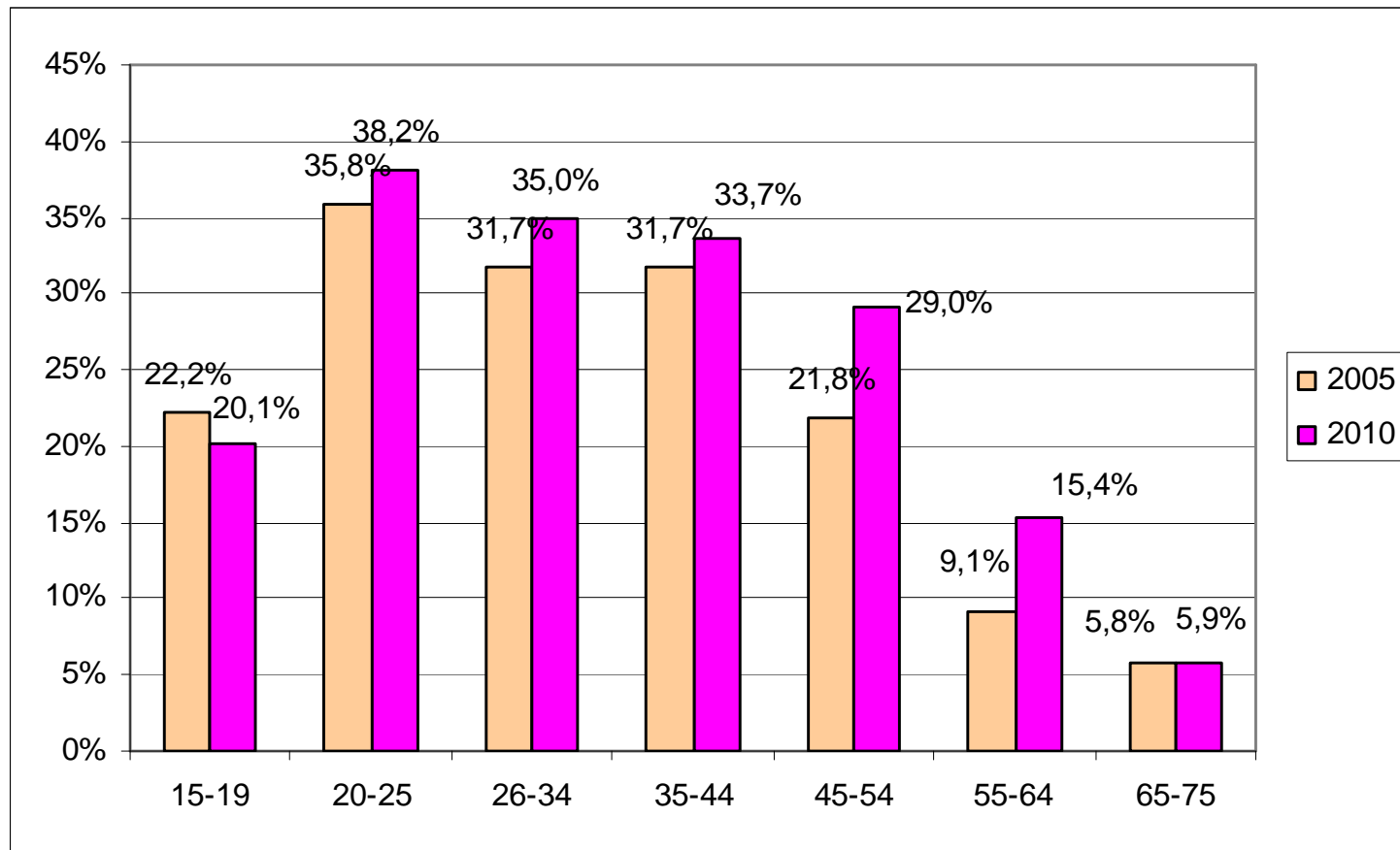
- Source : Direction générale des douanes et droits indirects

Evolution de l'usage quotidien de tabac parmi les hommes



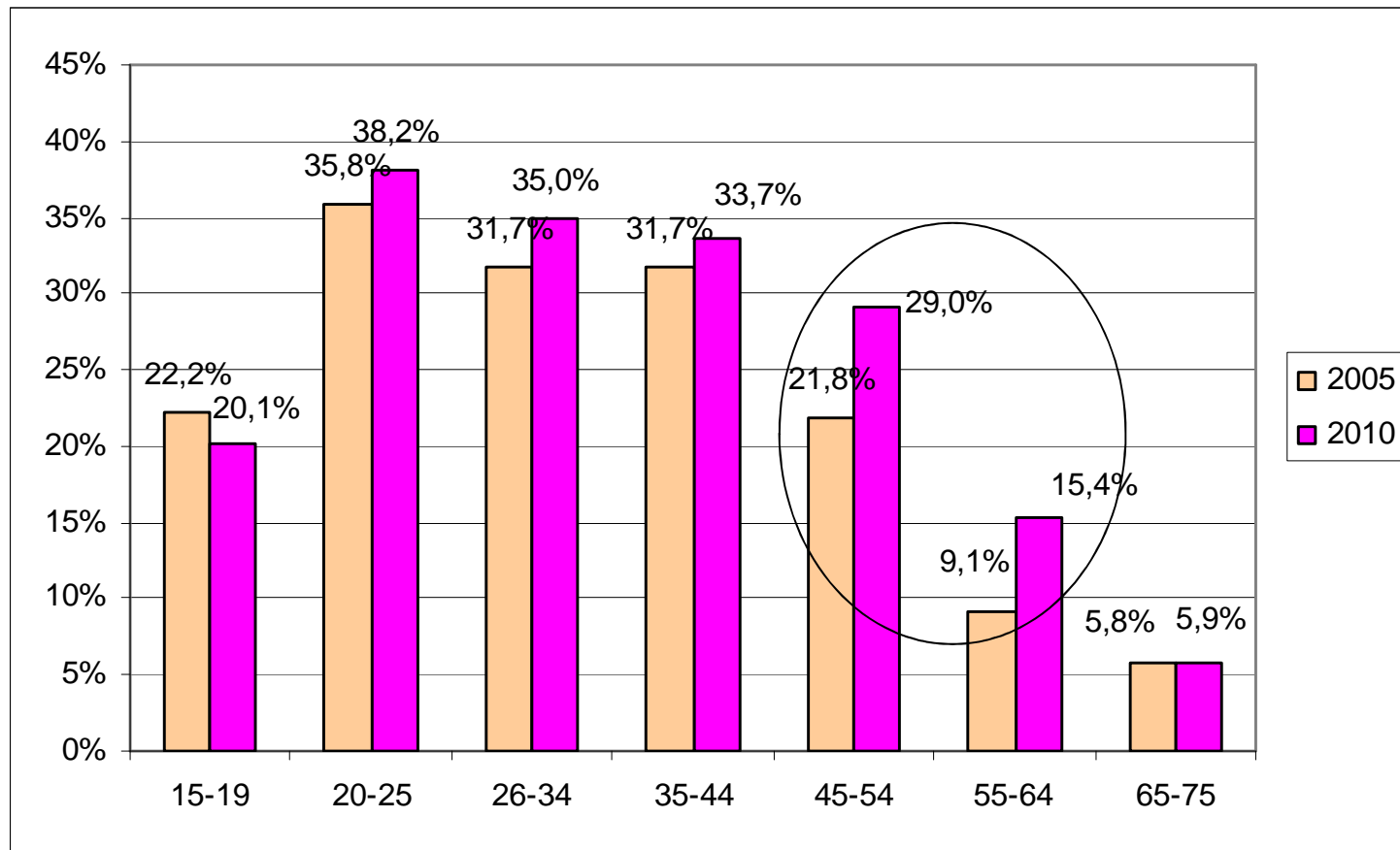
Sources : Baromètres Santé 2005, 2010, INPES.

Evolution de l'usage quotidien de tabac parmi les femmes




Sources : Baromètres Santé 2005, 2010, INPES.

Evolution de l'usage quotidien de tabac parmi les femmes



Sources : Baromètres Santé 2005, 2010, INPES.

We make Virginia Slims especially for women because they are biologically superior to men.



Virginia Slims.

You've come a long way, baby.

Doc

You've come a long way, baby.

Virginia Slims.



Regul. U.S. Patent. 18 mg "tar," 1.2 mg. nicotine av. per cigarette by FTC method.

This is *Superslims* FROM VIRGINIA SLIMS




LOW SMOKE™ 20% LESS SMOKE FROM THE LIT END.

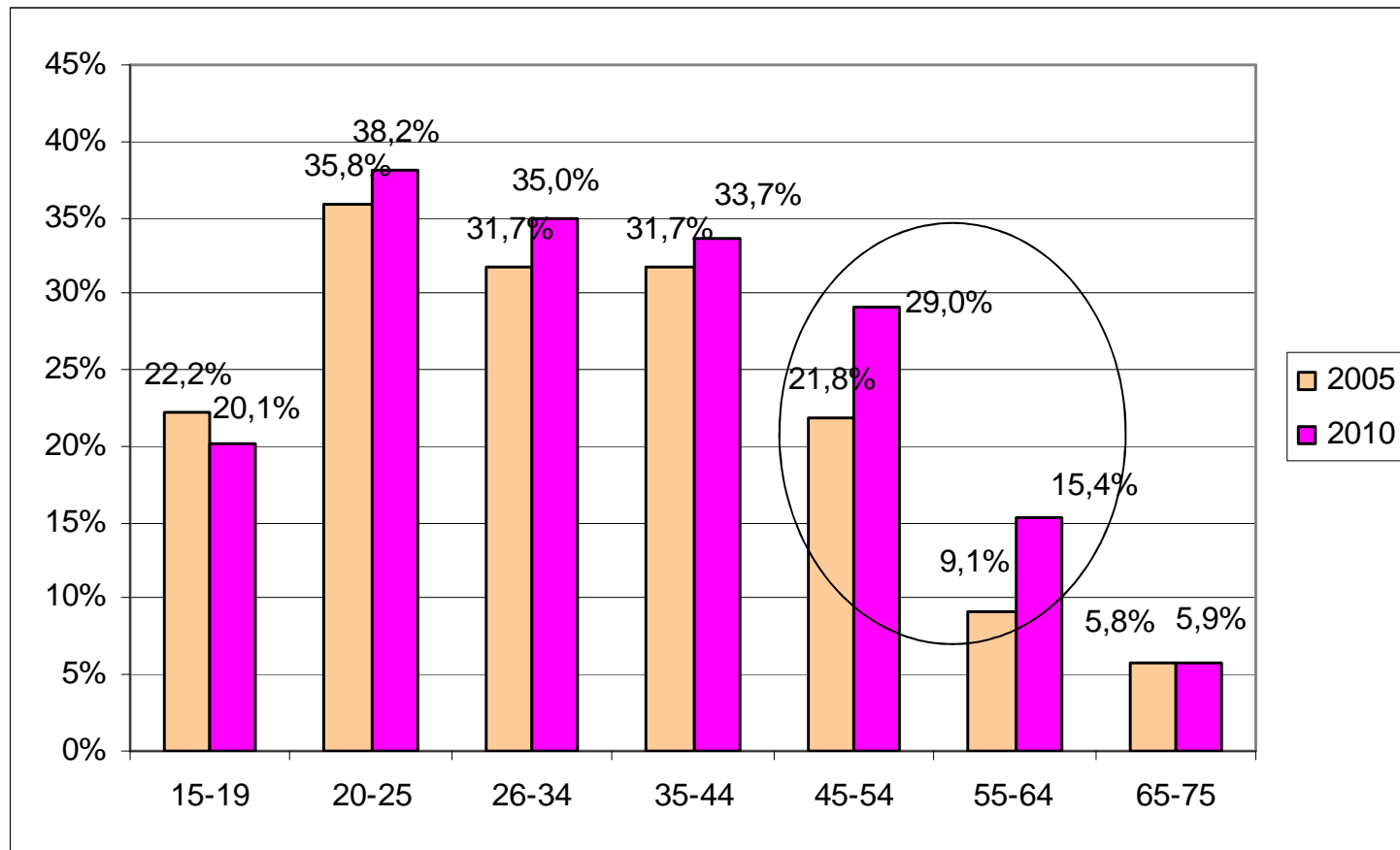
THE ULTIMA LIZ WITH MORE TASTE THAN MEETS THE EYE.

© Philip Morris Inc. 1998
Flakloria Inc. Copyright
0 mg "tar," 0.5 mg nicotine av. per cigarette by FTC method.

SURGEON GENERAL'S WARNING: Cigarette Smoke Contains Carbon Monoxide.

Found in Mom's Basement

Evolution de l'usage quotidien de tabac parmi les femmes



Sources : Baromètres Santé 2005, 2010, INPES.

D'autres évolutions 2005-2010

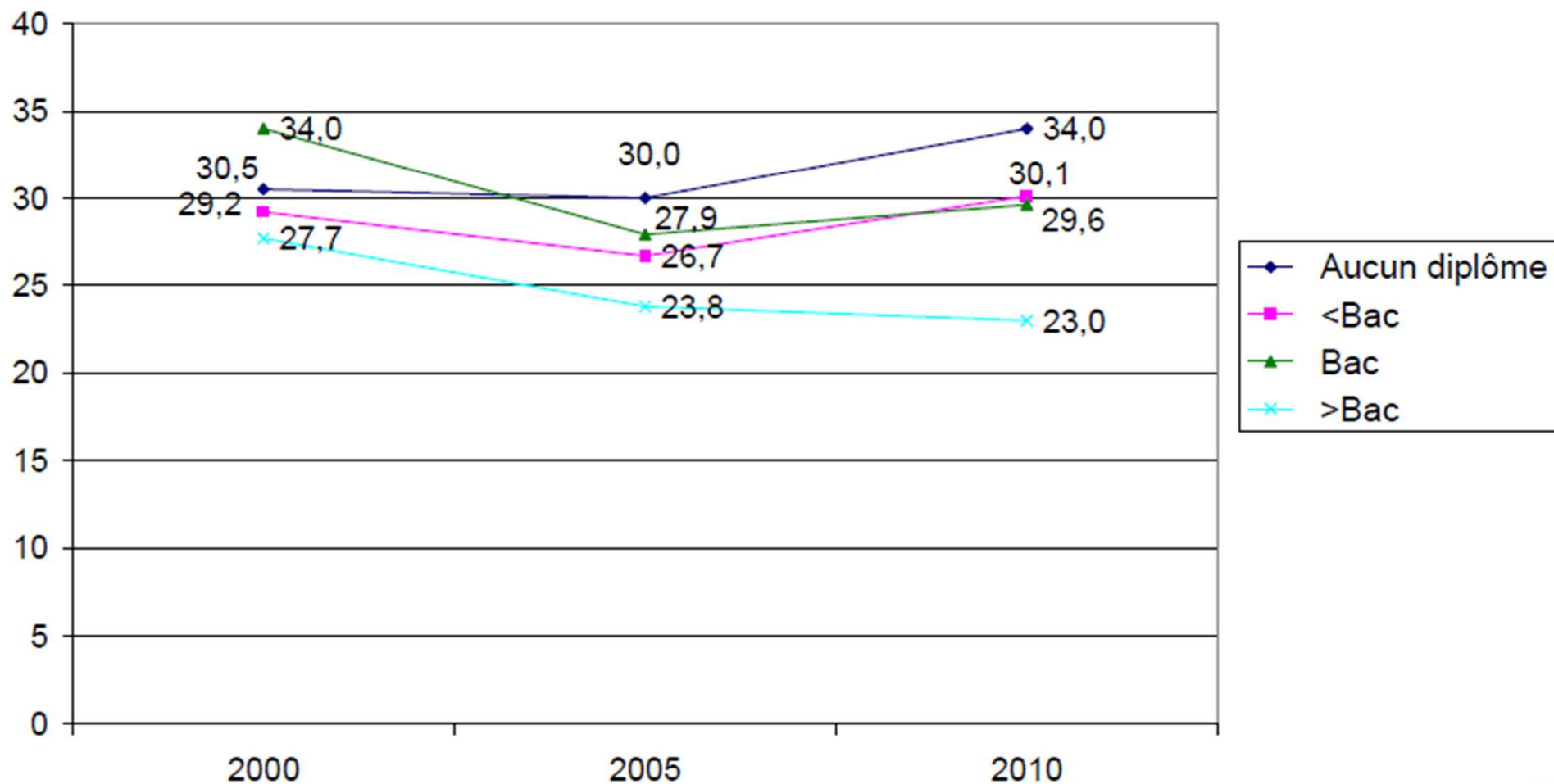
- **Baisse de la part des gros fumeurs** (+ de 10 cigarettes par jours) : de 73% en 2005 à 69% en 2010
- **Baisse du nombre moyen de cigarettes** fumées par jour (de 15,4 en 2005 à 13,9 en 2010)
- L'envie d'arrêter de fumer a fortement diminué depuis 2005 où elle concernait 64,8% des fumeurs réguliers âgés de 15 à 75 ans, à 57,6% en 2010
- Les hommes sont plus nombreux à déclarer vouloir arrêter de fumer que les femmes (60,8% vs 53,6%, $p < 0,05$).

Prévalence du tabagisme régulier parmi les 15-75 ans selon le statut d'activité (en %)



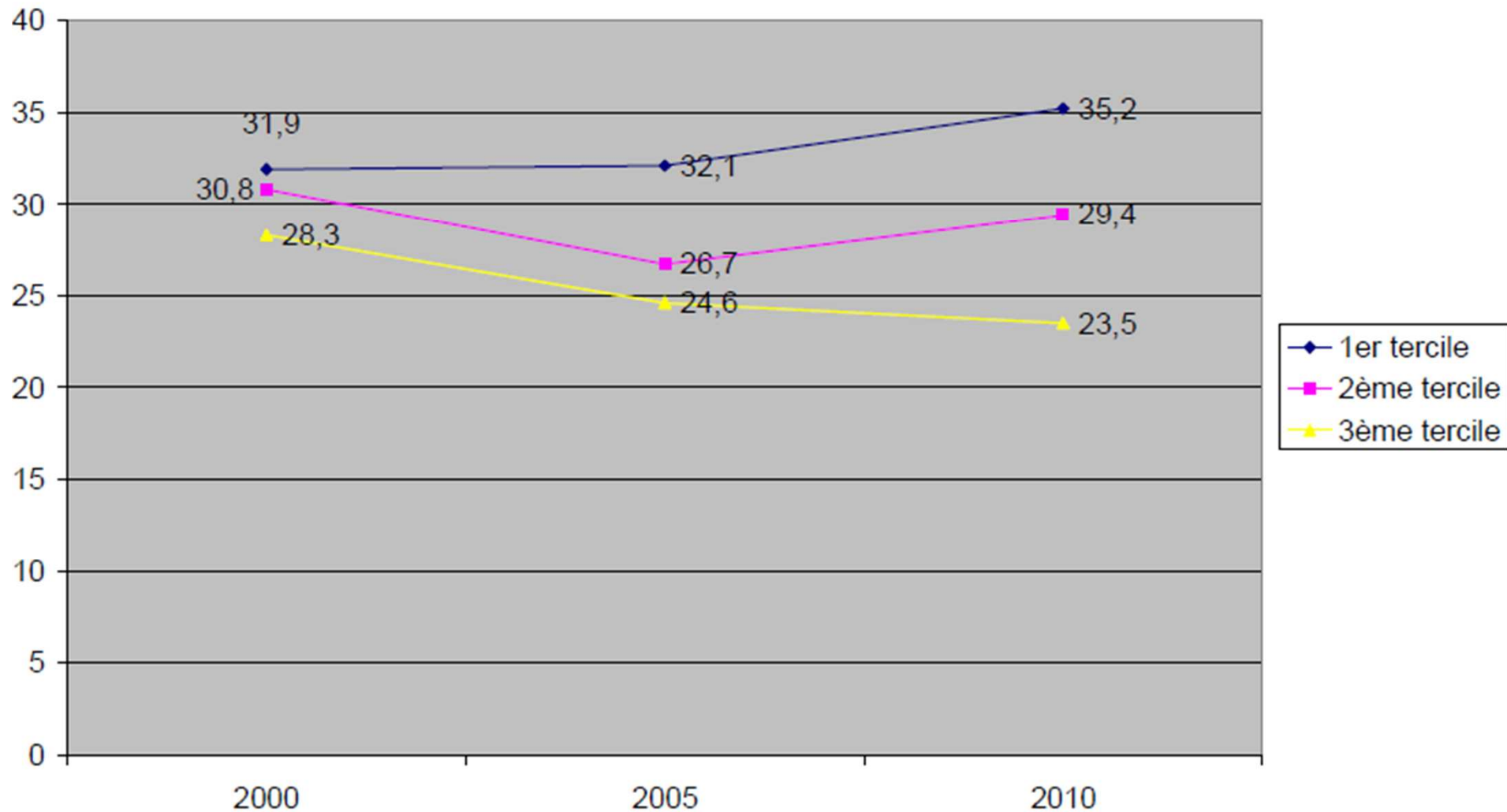
Sources : Baromètres Santé 2000, 2005, 2010, INPES

Prévalence du tabagisme régulier parmi les 15-75 ans selon le niveau de diplôme (en %)



Sources : Baromètres Santé 2000, 2005, 2010, INPES

Prévalence du tabagisme régulier parmi les 15-75 ans selon le niveau de revenu (en %)



Sources : Baromètres Santé 2000, 2005, 2010, INPES

Smoking prevalence in the European Union: a comparison of national and transnational prevalence survey methods and results

Ilze Bogdanovica,¹ Fiona Godfrey,² Ann McNeill,¹ John Britton¹

Results Most national surveys used similar multistage sampling methods and involved sample sizes of 3000 or more, but the phrasing of the questions used to define smoking, the inclusion or exclusion of occasional smokers, the age ranges of participants and the frequency of national surveys varied substantially between countries. The Eurobarometer study used the same questions in all countries but in sample sizes of 1000, or in 3 countries, 500. Eurobarometer 2006 smoking prevalence estimates were on average 0.37 percentage points higher than those in national surveys, but with a 95% range from -10.49 to $+11.23$ percentage points. At the extremes, the equivalent national prevalence estimate for Slovakia was 13.0% higher and for the UK 10.0% lower than the Eurobarometer figure.

Conclusions Measurements of the prevalence of smoking, the biggest avoidable public health threat in the European Union, are highly discrepant within countries between national and European Commission survey estimates. Monitoring national smoking prevalence on a regular basis, using standardised methods in representative population samples, is an urgent priority for the EU.

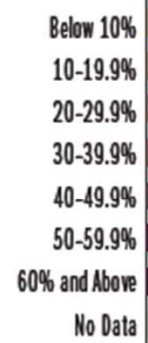
Smoking prevalence in the European Union: a comparison of national and transnational prevalence survey methods and results

Ilze Bogdanovica,¹ Fiona Godfrey,² Ann McNeill,¹ John Britton¹

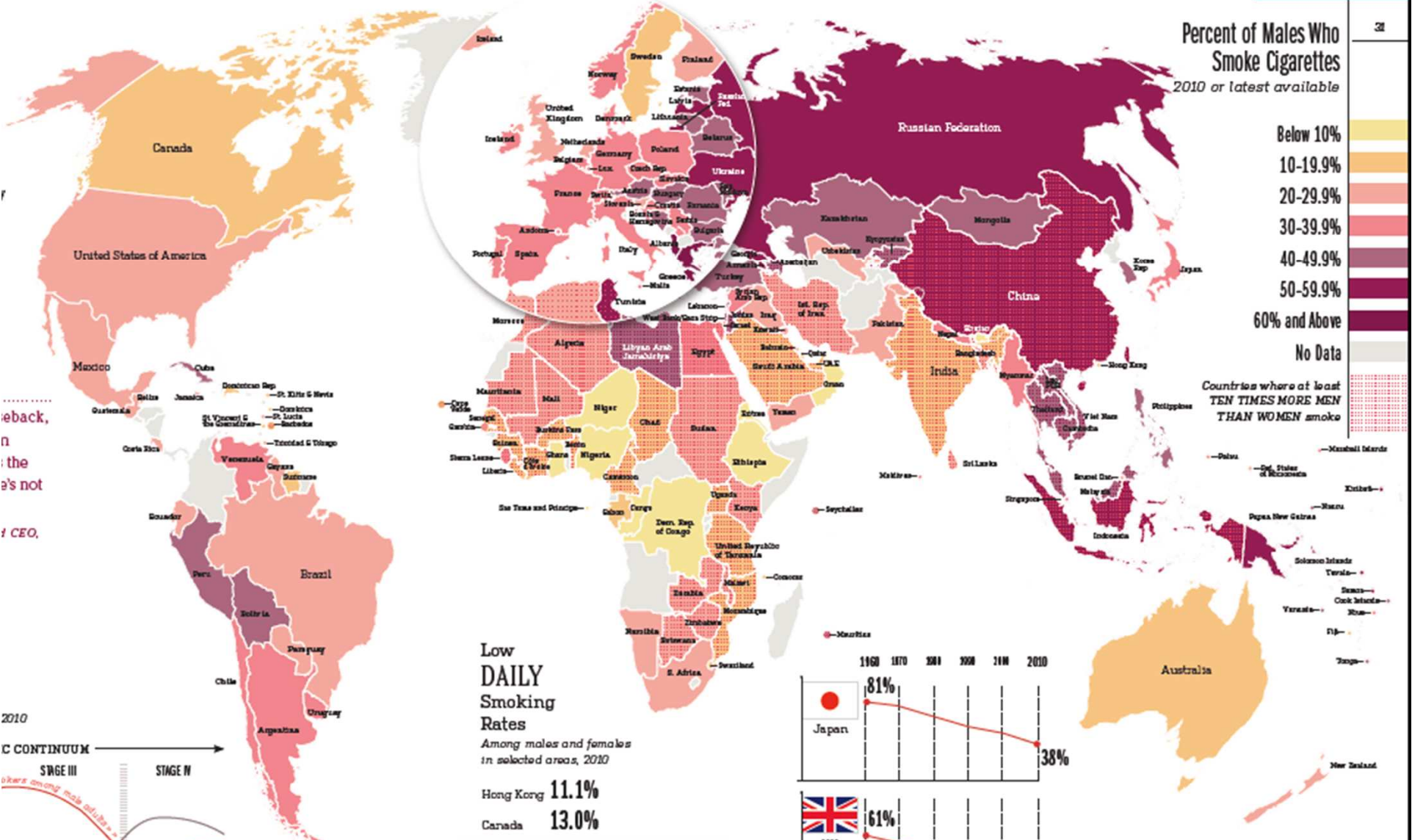
Results Most national surveys used similar multistage sampling methods and involved sample sizes of 3000 or more, but the phrasing of the questions used to define smoking, the inclusion or exclusion of occasional smokers, the age ranges of participants and the frequency of national surveys varied substantially between countries. The Eurobarometer study used the same questions in all countries but in sample sizes of 1000, or in 3 countries, 500. Eurobarometer 2006 smoking prevalence estimates were on average 0.37 percentage points higher than those in national surveys, but with a 95% range from -10.49 to +11.23 percentage points. At the extremes, the equivalent national prevalence estimate for Slovakia was 13.0% higher and for the UK 10.0% lower than the Eurobarometer figure.

Conclusions Measurements of the prevalence of smoking, the biggest avoidable public health threat in the European Union, are highly discrepant within countries between national and European Commission survey estimates. Monitoring national smoking prevalence on a regular basis, using standardised methods in representative population samples, is an urgent priority for the EU.

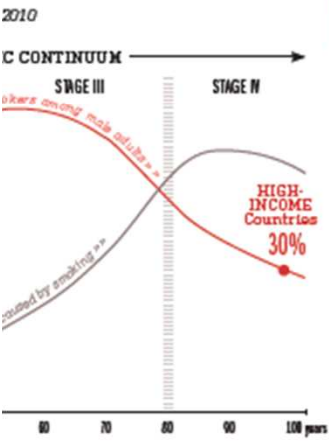
Percent of Males Who Smoke Cigarettes 2010 or latest available



Countries where at least
**TEN TIMES MORE MEN
THAN WOMEN** smoke

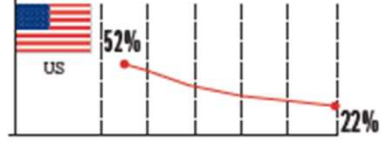
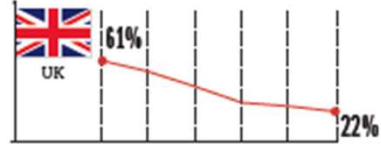
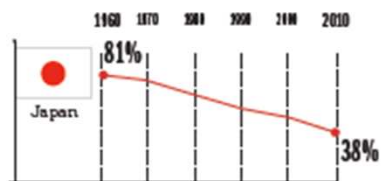


...back,
n
the
s's not
CEO.



Low DAILY Smoking Rates Among males and females in selected areas, 2010

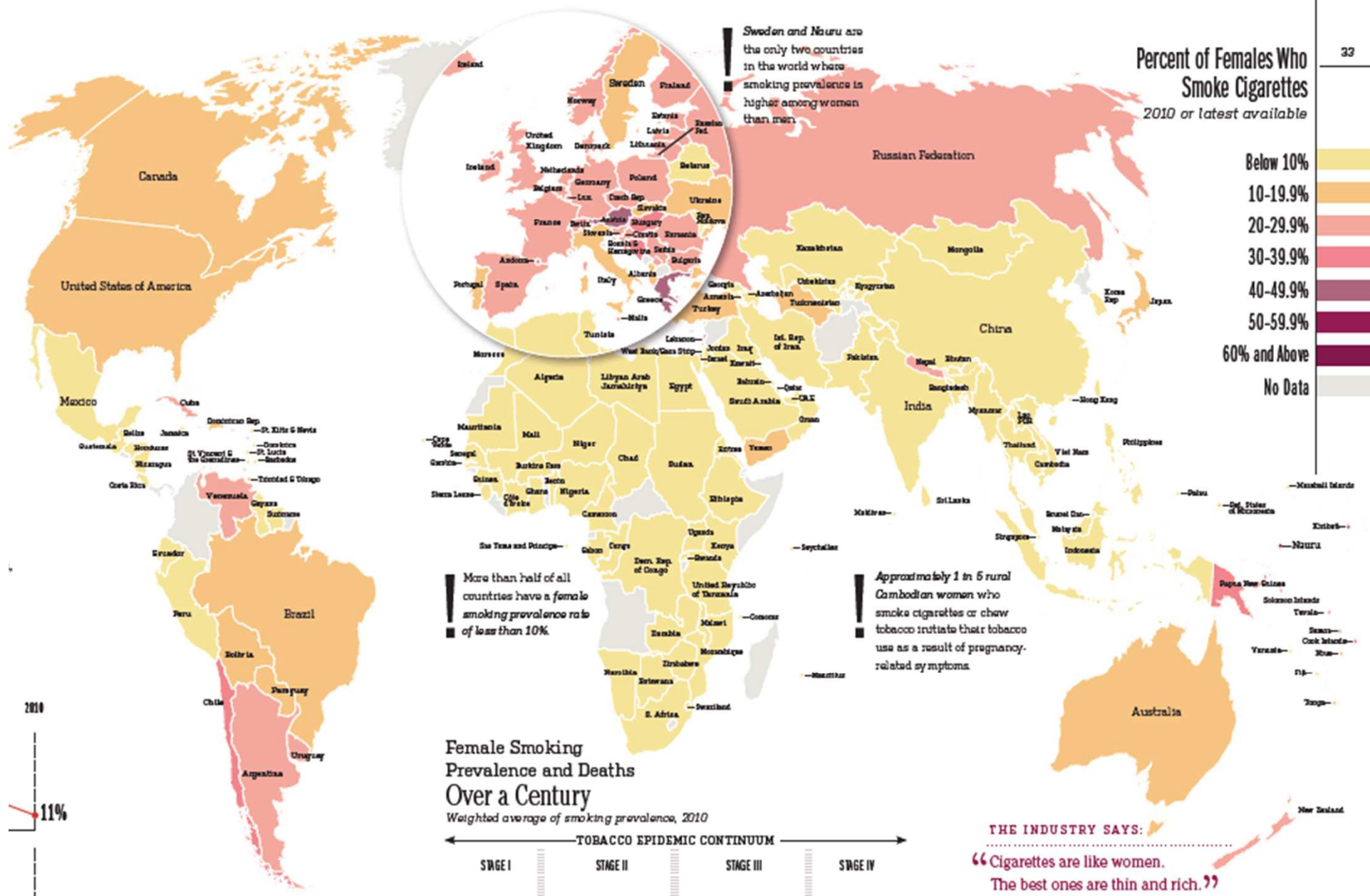
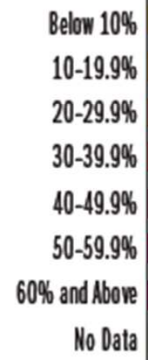
- Hong Kong 11.1%
- Canada 13.0%
- Iceland 14.3%
- Sweden 14.3%
- Australia 15.1%
- US 15.1%



Smoking Trends Adult Male Current Smoking Prevalence 1960-2010 (or latest available)

Data rounded to nearest whole number.
UK includes Great Britain and Northern Ireland.

Percent of Females Who Smoke Cigarettes
2010 or latest available



Sweden and Nauru are the only two countries in the world where smoking prevalence is higher among women than men.

More than half of all countries have a female smoking prevalence rate of less than 10%.

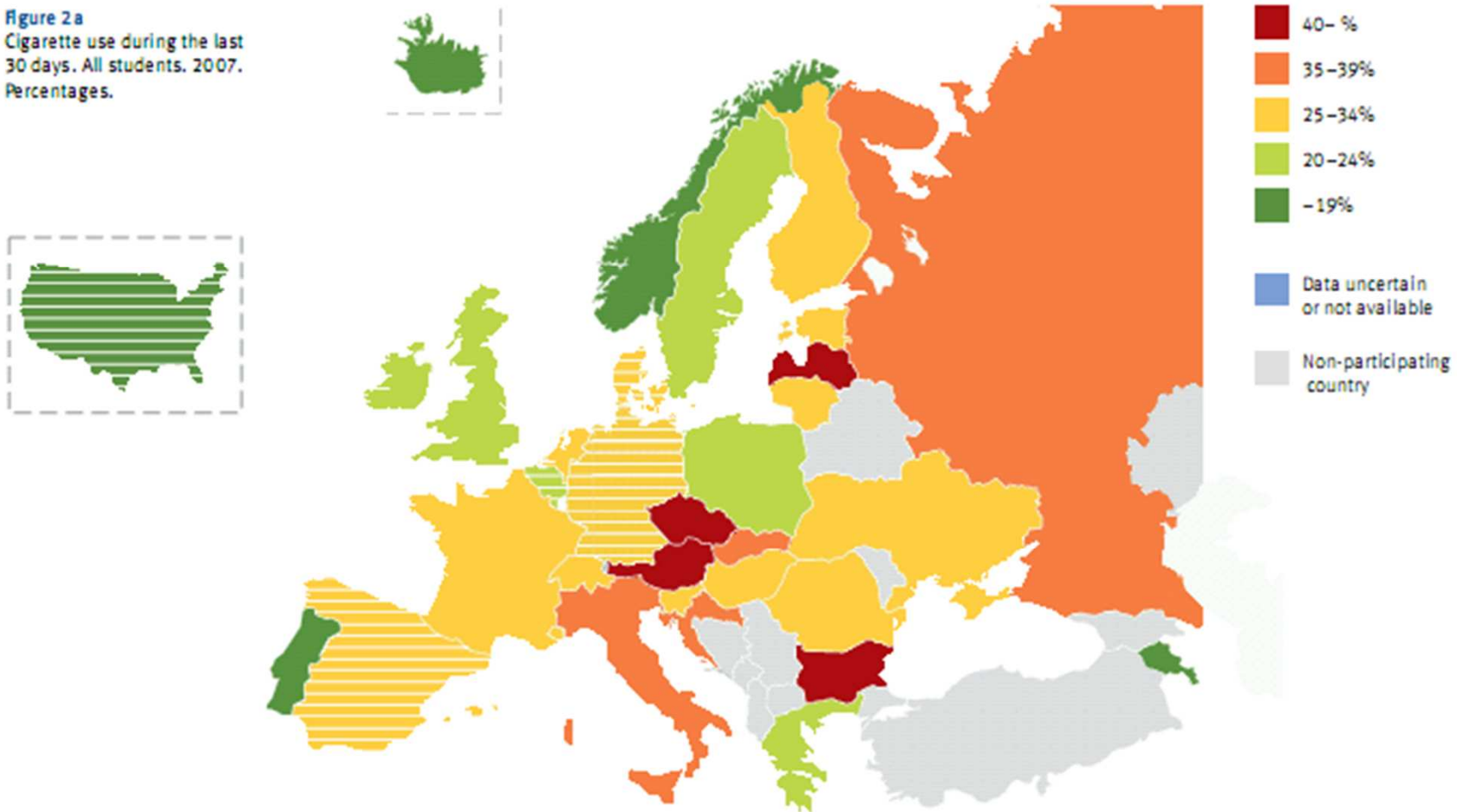
Approximately 1 in 6 rural Cambodian women who smoke cigarettes or chew tobacco attribute their tobacco use as a result of pregnancy-related symptoms.



THE INDUSTRY SAYS:
“Cigarettes are like women.
The best ones are thin and rich.”

Usage actuel de tabac à 16 ans

Figure 2a
Cigarette use during the last
30 days. All students. 2007.
Percentages.



Source : ESPAD 2007, OFDT, Inserm

Situation européenne

Figure 2a
Cigarette use during the last
30 days. All students. 2007.
Percentages.

